



Pierce

## ARROW XT CHASSIS



### *Battle-tested, fire fighter approved.*

No brag, just fact: The Arrow XT™ from Pierce has everything you need for urban firefighting, and nothing you don't. Bearing the name that defined the modern fire chassis, the Arrow XT is the consummate firefighter's truck. It comes equipped with your choice of Caterpillar, Cummins or Detroit Diesel engines rated at up to 525 hp, an "extreme tilt" (hence the name XT) cab that allows easy inspection and maintenance of the drive train and brakes, standard TAK-4® Independent Front Suspension and oversize 120 ksi 13 3/8" carbon steel frame rails with heat-treated liners. Add a clean, functional interior (no plastic to break) with a heater like a furnace, twin air conditioners that'll rival an Arctic winter and a no-nonsense instrument panel and controls. Wrap this all up with either a hard-wired electrical system or Command Zone™ advanced electronics and you have the truck of your dreams.

#### **Seamless Welded Roof You Can Count On**

City life isn't easy. There's acid rain and fog, dirty snow, industrial pollutants and no shortage of airborne debris. Good thing the Arrow XT has a one-piece welded roof that's engineered to shed it all with ease. This simple and effective engineering detail is just one more reason why the Arrow XT has evolved to be the urban firefighter's best friend.


#### **Built to Get You There – and Back Again**

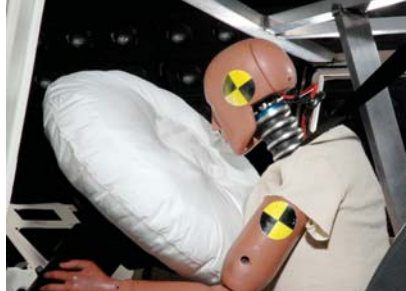
From ramps and curbs to potholes and fallen tree limbs, you never know what might be around the next corner. But never mind. With an impressive 15 inches of ground clearance to the bottom of the radiator, and a 15-degree angle of approach and departure, the Arrow XT is built to get you up it, over it and to the scene.

#### **All-Business Interior is Ready to Work**

Basic is beautiful, especially when you're beholding the Arrow XT interior. Why? It features seamless rubber floor mats, vinyl and painted interior surfaces that shrug off abuse and are a breeze to clean. A straightforward instrument and control panel with big, easy-to-read gauges. Fully accessible electronics for simplified maintenance and repair. Even a broad, flat work area on top of the engine compartment. And it's all heavy-duty, so you can concentrate on work, without over-working your machine.

## SPECIFICATIONS\*

ARROW XT™	
Engine Horsepower	345-525 hp
Transmission	Allison EVS3000 & 4000
Alternator	Up to 540 amp
GVW Ratings	Front: Up to 24,000 Rear: Up to 58,000
Frame Rails Size/RBM	13 <sup>3</sup> / <sub>8</sub> "/33.98cm
Cab	2-door or 4-door cab 57", 67" or 81" 144.8cm, 170.2cm, 205.7cm
Cab Raised	10", 16" or 20" 25.4cm, 40.6cm, 50.8cm*
Seating Capacity	Up to 8
TAK-4® 	Standard
Cramp Angle	45-degree max.
Brake Size	17" rotor w/TAK-4
Rear Axle Suspension	Leaf or air Single or tandem
Water Tank Capacity	Up to 3,000 gal / 11356.235 liters
Command Zone™	Optional

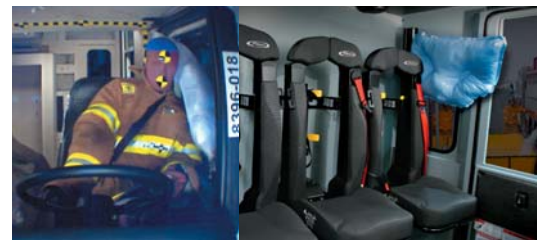


Frontal air bag protection



45-degree full-tilt cab

Easy power train access (90-degree tilt with aid of overhead crane)



Side Roll Protection system  
Air bags/curtains in front & rear

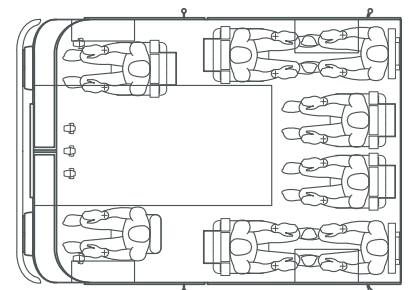
- Big power, up to 525 hp engines
- Hard-wired electrical system or Command Zone™ electronics for advanced reliability, simplified subsystem integration, easier troubleshooting and maintenance also available
- Big radiator for extra cooling power (1,396 sq. in.)
- TAK-4® Independent Front Suspension for smooth ride, better braking performance
- Side Roll Protection system for enhanced firefighter safety
- Frontal air bag protection
- 45-degree cramp angle for tight maneuvering
- Electronic Stability Control (ESC)

- Interior panels provide easy service for battery and fluid checks
- Easy access to dual wiper motors for easier maintenance
- Heavy-duty parts throughout – hinges, cast frame extensions, doors and panels for long-term durability
- Rugged interior with easily replaced door window modules
- Wraparound, one-piece headlight and turn signal bezel with LED lighting for greater visibility
- Standard interior storage compartments to keep loose items out of the way
- For added strength, multiple chassis component castings, not fabrications
- Lift-and-tow capable for on-scene rescue capability



At Pierce, leadership means building safety into every apparatus we make. 360° Protection From Every Angle is a bumper-to-bumper focus on firefighter safety. To, from and at the scene.

Cab is available in a wide range of seating configurations for up to 8 firefighters.



PERFORM. LIKE NO OTHER.™

Pierce Manufacturing Inc., An Oshkosh Corporation Company  
P.O. Box 2017, Appleton WI 54912-2017 USA

Specifications, descriptions and illustrative material in this literature are as accurate as known at the time of publication, but are subject to change without notice. Illustrations may include optional equipment and accessories and may not include all standard equipment. All measurements are nominal values.

© Pierce Manufacturing Inc., Pierce and the Pierce logo are registered trademarks, Arrow XT, Command Zone and TAK-4 are trademarks, and Perform. Like No Other. and the 360° Protection from Every Angle design are service marks, of Pierce Manufacturing Inc., Appleton, WI. Printed in U.S.A. All other trademarks are the property of their respective owners.

P-0014-ARRXTSS 7/08